

## Adrena Dual Routing

09 Dec 2011

When cruising, if the wind has died and you start the engine, the Adrena's routing software should take into account the engine-powered routes when necessary. The Adrena dual routing is said to have the ability to mix the two propulsion modes in one routing calculation.

Dual-routing provides the best route to follow indicating wind and engine periods, and will also provide an estimation of fuel consumption.

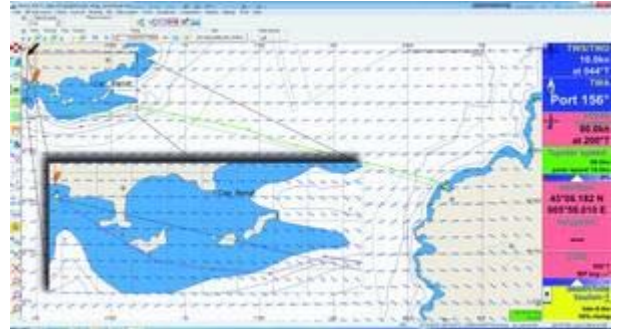
Revolutionising cruising, dual-routing can bring accurate information about the skipper's navigation which in turn provides increased safety and performance.

Also from Adrena is the new IsoRoute and Multimedia in the track.

IsoRoute is said to assist with racing strategy, focusing on what was happening around the best route prediction. IsoRoutes draws on the chart an area covering the way to destination with a minimum delay.

With Multimedia in the track, you can now synchronise multimedia files in live. Pictures, videos and sounds recorded on deck, can apparently enrich the tracks, Sailects and Trimbooks providing a more efficient navigation feedback.

For more information visit [www.adrena.fr](http://www.adrena.fr)



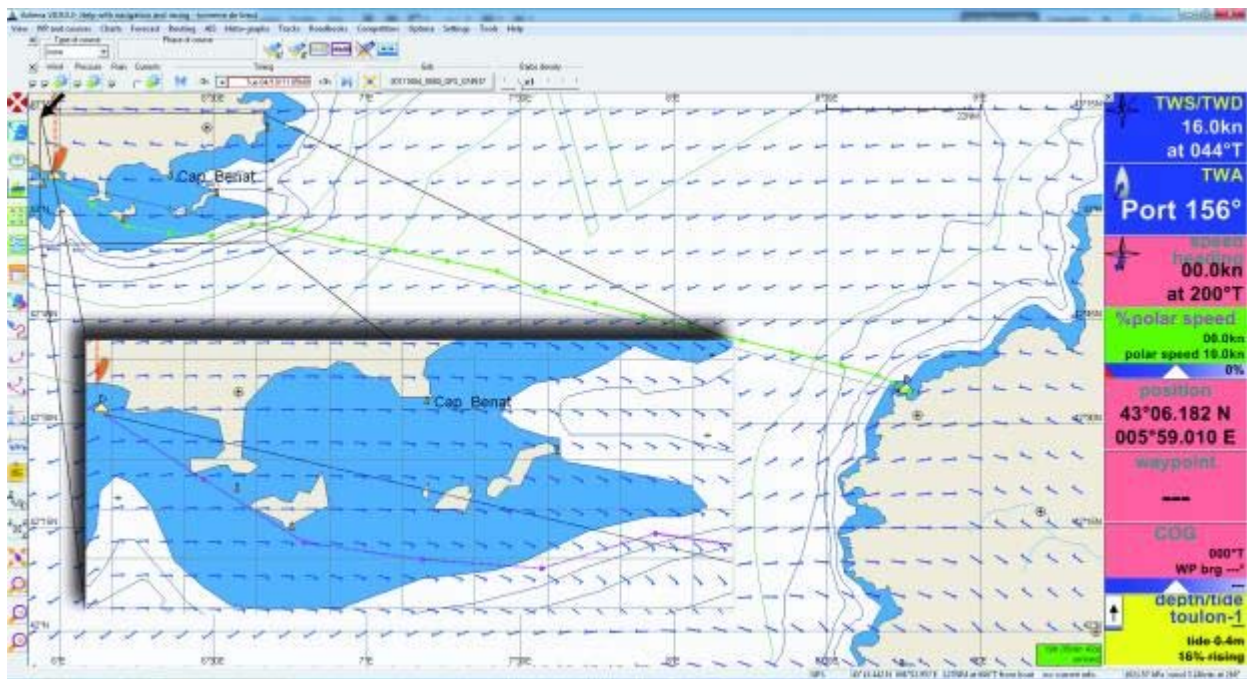
[more sailing gear»](#)

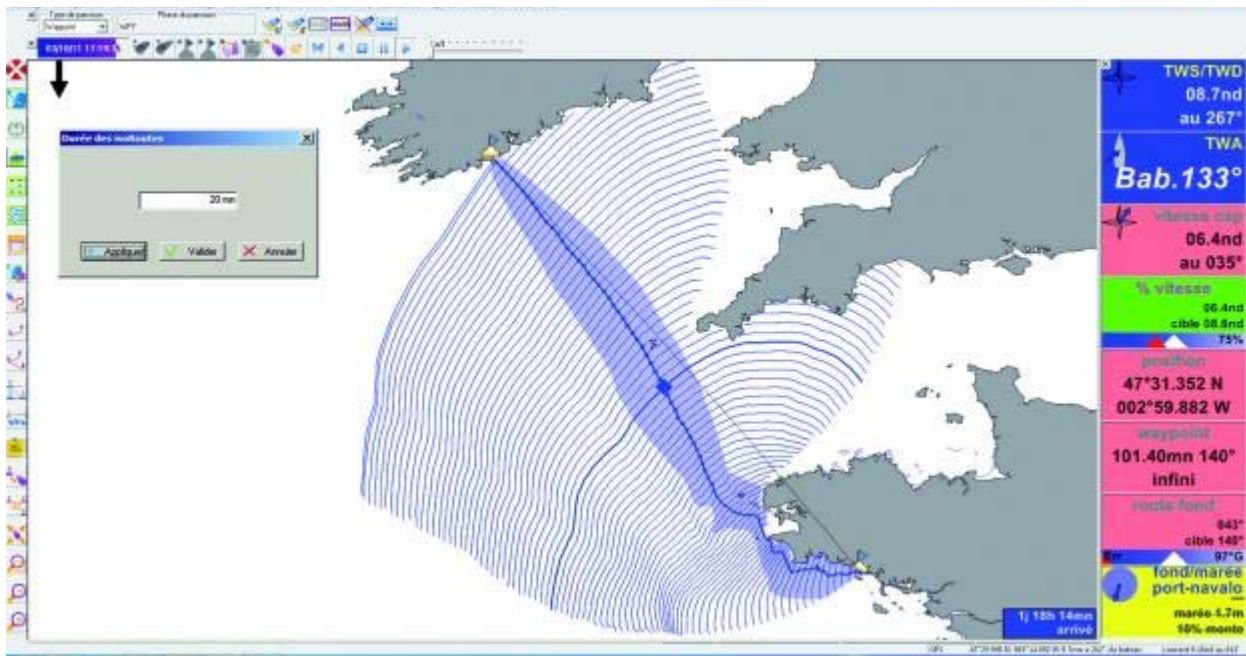
[Wireless instruments](#)

[New high performance keelboat suit from Gill](#)

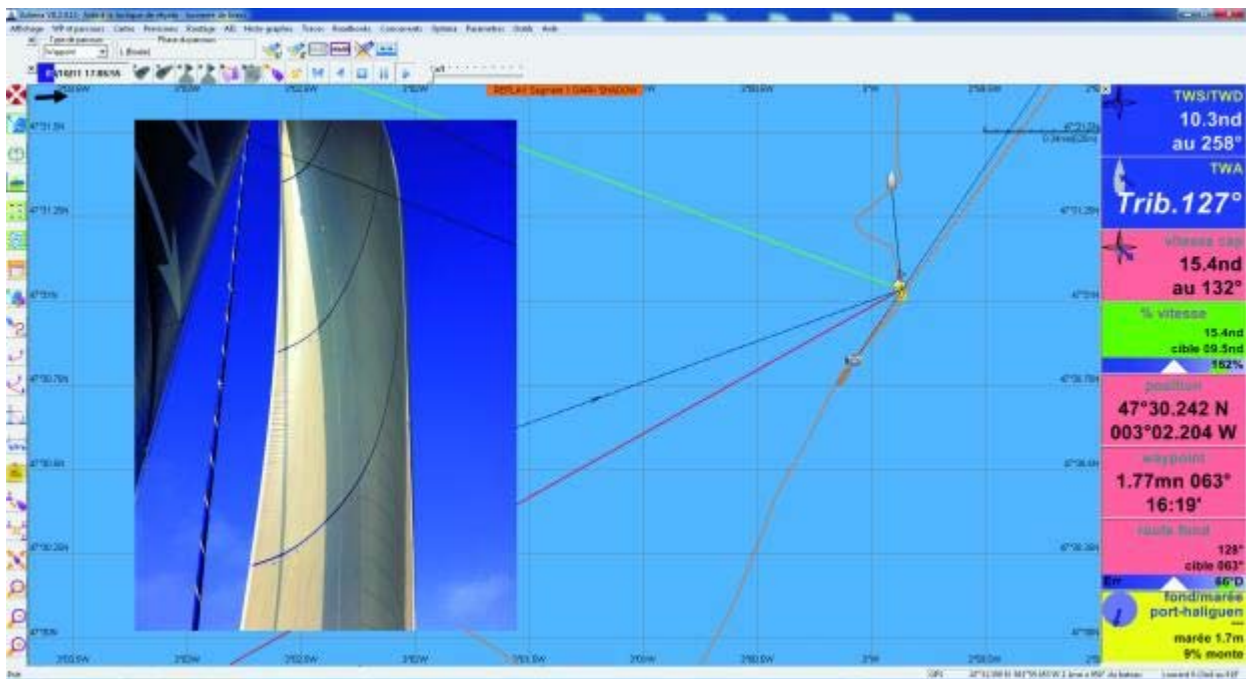
[Lighthouse Marine Business Expansion](#)

[MASE Generators](#)





IsoRoute



Adrena

Multimedia in the track