

Focus on... AIS

The AIS function is integrated into the ADRENA software. AIS reveals the identity, status, position and the route of ships lying in your navigation area, all clearly displayed on the screen of your onboard computer. It provides added safety when navigating in dangerous areas or when navigating in foggy conditions.

AIS

The Automatic Identification System (AIS) is a system of automated exchanges of messages between ships via VHF radio. It enables vessels to know the identity, status, position and the route of ships lying in the navigation area.

AIS Vessel Tracking

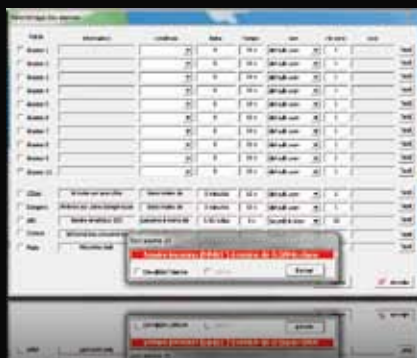
It is possible to keep track of other boats through the display of their position and their routing plans. Different AIS vessels in the area are displayed in green, as well as the trace of their route up to the present moment, and also their planned route.

Alarms (Adrena software)

You can validate an AIS alarm by checking «AIS», and specifying the safety distance (the same value as that specified in the AIS parameters), the type and number of sounds that are produced.

List of Ships

A summary table of each vessel is available, displaying all its characteristics and if there is any risk of collision. All this information allows you to see beyond the area displayed on the screen and to better understand a situation that might arise later.



KEY FEATURES

- Name
- Type of vessel
- MMSI number
- Status (under way, using engine, at anchor, in port, etc ...)
- Course over ground (bearing and distance)
- Distance to the point where it will come closest to your position.
- Display to tell you whether a boat will cross in front or behind you.
- Alarm to alert you to collision course (Adrena software))

«The last week of racing, when we were pushing hard in the trade winds, I used a lot of different alarms: on the cape, the wind strength ... but also for cargo ships with AIS. «

Thierry CHABAGNY, trophée BPE 2009