

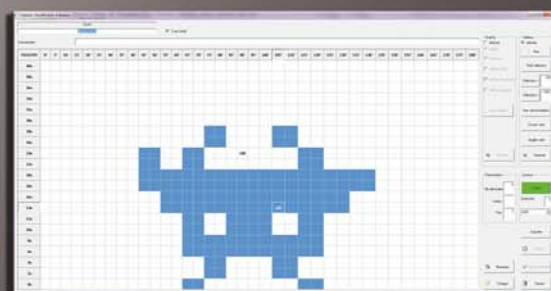
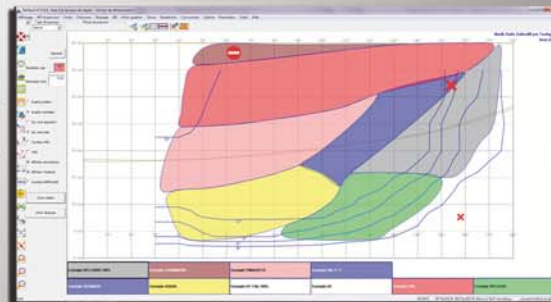
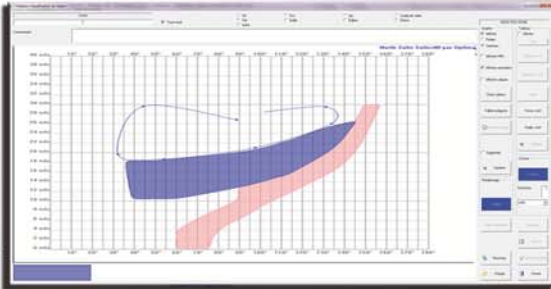
Range Optima

Zoom on the Sailect® function

Sailect® displays the ranges of use of each sail.

This is an exclusive function, totally integrated into Optima and developed in cooperation with North Sails. It is continually telling you whether your sails are suitable for the current wind conditions, and anticipates the best sails to use on the following tacks.

In particular, with Sailect® the boat's sail wardrobe can be optimised during design or when sailing.



Creation of a Sailect® (OptimaPro module)

The Sailect® is created either in graphical form on a Cartesian representation, or in a numerical form in a table. In general, the sailmaker provides his customer with the Sailect®, i.e. the graphical representation of the range of use of the boat's sails.

New variables (keel, ballast, foils, fins) are available with this function which also offers the possibility of creating and reading nomograms.

Displaying the range of use of the sail wardrobe (Optima)

Once the Sailect® have been integrated, the navigator can at any time see the right sail configuration in his program. He can thus be sure that he is carrying the right sails for the current sailing conditions.

Anticipating a future situation (Optima software)

You can also ask the Optima software what will be the appropriate sail for the next tack. To do this, you simply enter the heading of the next tack and a red arrow appears indicating the sail to use.

A relevant discussion with the sailmaker

As the Optima software records all the sailing parameters, studying the Sailect® is going to help the sailor explaining the sailmaker what he wants, based on reliable recorded data. The choice of a new sail can now be based on objective information.

And more, with the OptimaPro version, the Sailect give you statistics of use for all the sails including the wind data to help you customize the next season sails.

Using Sailect in Adrena software

In order to anticipate a sail change,

- For inshore races, Sailect appears in the course monitoring toolbar.
- In the route planning module, the sails can be displayed in the Legs table and if a sail becomes out of order, Optimapro and the Sailect function will calculate the new polar and readjust the routings in accordance to the loss!

New for 2011!

Track on Sailect : it is possible to color or thicken a track on Sailect.

Thanks to the Sailect function in OptimaPro, it is now possible to create a proportional polygon.

"Adrena, it is really marvellous, the table of routing is also going to tell me that tonight; I will have one reef in the main with the solent and that tomorrow morning I will be under big spi. This way, I can anticipate the next 24/48h schedule."

Roland Jourdain, Veolia Environnement Skipper, Double winner Route du Rhum 2006 & 2010