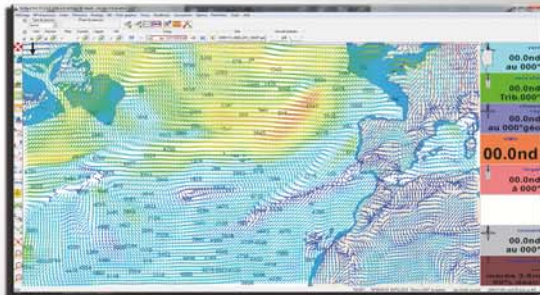
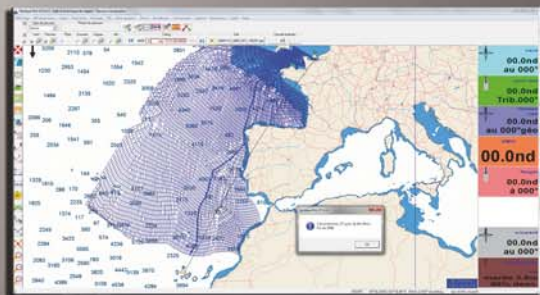


The Routing module calculates the best course for inshore and ocean races. It provides navigators with a useful racing and course optimisation tool.

Leg	Start	End	Time	Distance	Speed	Wind	Current	Pressure	Precipitation
1	48° 15' N 12° 30' W	48° 30' N 12° 15' W	00:15	15.0	10.0	10.0	0.0	1013.0	0.0
2	48° 30' N 12° 15' W	48° 45' N 12° 00' W	00:15	15.0	10.0	10.0	0.0	1013.0	0.0
3	48° 45' N 12° 00' W	49° 00' N 11° 45' W	00:15	15.0	10.0	10.0	0.0	1013.0	0.0

Reading and displaying GRIBs

The Routing module displays the wind, current, pressure and precipitation GRIB on the charts.

GRIBs can be downloaded from most sources of weather data or directly from Adrena via GRIB.US, Navimail 2 or PredictWind application. The software has a direct interface for this.

Calculating a route plan

The course is calculated from the parameters chosen: start, destination, calculation parameters, polars, wind, current and dangers to avoid.

Several successive course calculations can be obtained by setting certain parameters, then displayed for comparison.

In addition one or more courses can be simulated and the different sections analysed.

The extras in the Routing module

- The calculation algorithm includes the current and makes a correction for the background wind
- Adrena route planning calculates the optimum course automatically avoiding the coast.
- It can calculate a route plan from an inshore course: in this case, it is best to set the wind force to obtain a route plan calculated on variations in current.
- Adrena provides a customisable table of legs using the predicted sailing conditions and the recommended sail configuration (Sailect® function).
- The courses calculated show the wind conditions encountered throughout of course (post-it and symbols).
- 2 click route planning: One click for the start, one for the finish... Leave Adrena to prepare the route plan!

New for 2011 !

Optimised time calculation: a more powerful software to enable a more efficient and fast routing calculation.

Automatic routing save: by simply ticking the option, every route plan will be saved under its name in the software.

Ranking the routes: the routings can be classified in order to help the analyse and comparison.

"We are given a lot of data before the departure, especially by the Pôle Finistère Course au Large which uses Adrena to calculate all the routings and to provide us with the most complete roadbooks."

Armel Le Cleac'h, Skipper of Brit'Air, Winner of AG2R and Solitaire du Figaro 2010