

How to visualize track data in Adrena?

▪ **Replaying the track like in real time**


The first solution coming up is to replay the track like in real time.

You can do it by using the Adrena **Replay** function (Track->Replay). You can read the data linked the boat's position at a moment m. Thanks to the function "Replay: go here" available in the right click menu on any point of the track, all the points of a track are available. The data reading is made into the navigation data windows.

The problem is that it is giving an instant reading of the data and so it can turn long and hard to understand.

▪ **Using the Histo-graphs**

By using the histo-graphs, the reading schedule can be enlarged. You can do it whether by opening one data histo-graph by clicking in the data window, whether by displaying histo-

graph family via menu histo-graph or button  in the left toolbar.

▪ **Exporting to Excel**

Another solution is to export the track to Excel in order to read all the data line by line. To do so, you have to use the function Export to Excel available in the menu track.

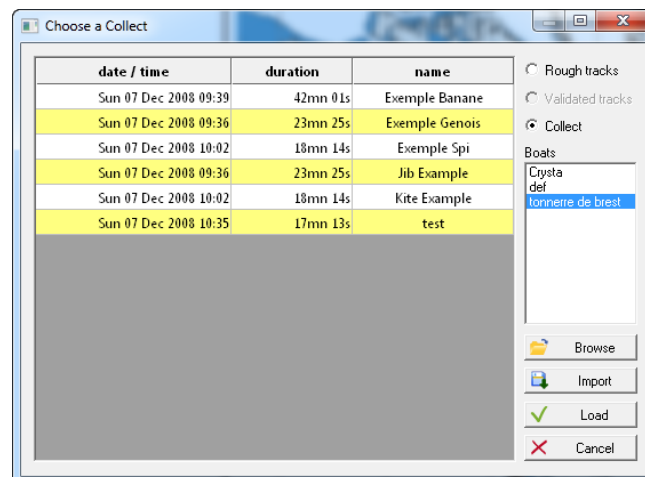
Those two solutions can answer specific demands, but they are quite restricting and request some kind of analysis routine.

▪ **The options of coloration and thickness of the track**

The options of coloration and thickness of the track are going to give a large view of the track's data and this way enable to work on more visual markers.

To replay a track, first you should load it.

Menu Track-> Load track

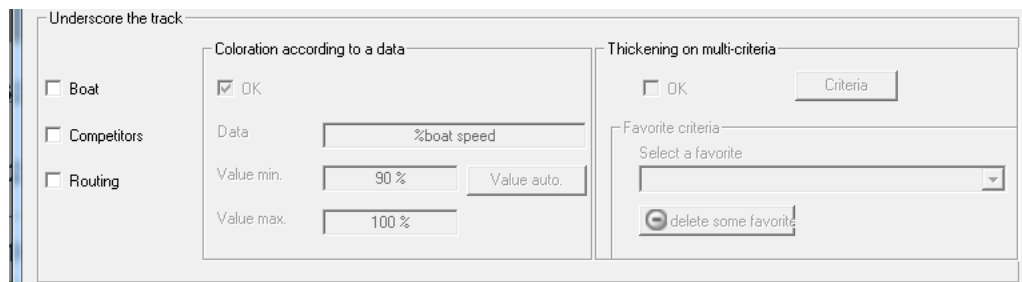


You access to all the tracks of all yours boats, whether they are rough, validated or stocked into a collect.

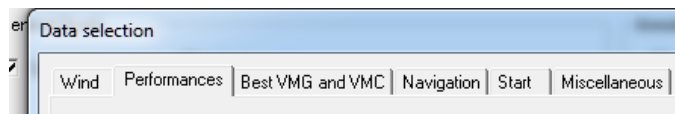
Note that those two options will apply on a boat's track, on a competitor's track or on a routing track. If they are validated for a boat's track, they will apply on all the loaded tracks. It is a display option, and not a characteristic of a particular track.



The two options of coloration and thickness are available via the track options button in the left side toolbar.

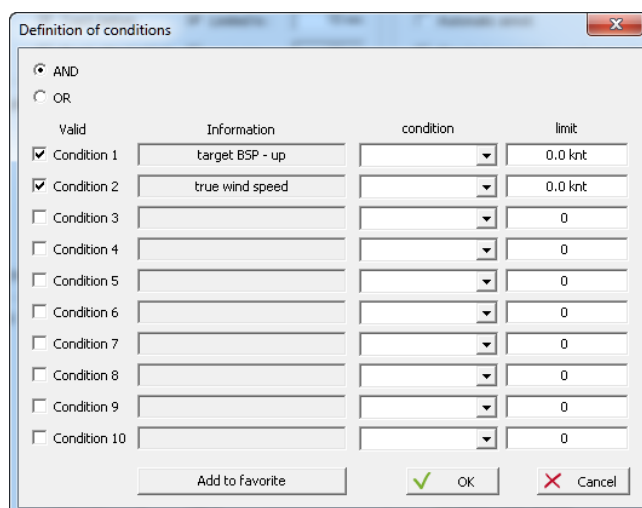


To choose the coloration data, double click on the data box and choose in the folders below.



Automatically Adrena is going to display the values maximum and minimum encountered in the loaded track. You can modify them manually. (double click in the box)

To define the thickness criteria, whether you click on the button “criteria” and define your settings, whether you choose into your favorite you’ve recorded before.



It is possible to combine several criteria and to save the conditions in a favorite list. If the result of the conditions is TRUE, the track will be thickened.